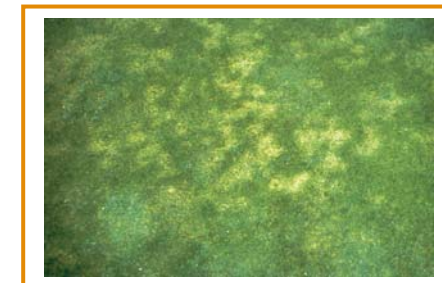


BACKGROUND

- Fescue (Festuca) perceived to be the most susceptible.
- Spots 25-50mm in diameter; distinct straw coloured sunken spots; leaf lesions have a bleached white centre and reddish brown borders, some mycelial growth may be visible in early morning.
- Disease triggered by: prolonged periods of leaf wetness moderately dry soil, humid with temperatures of 21-26°C; morning dews; low to deficient nitrogen (N) fertility, excessive thatch, frequent mowing.



APPROACH

1. Reduce periods of leaf wetness.
2. Maintain balanced nutritional inputs to prevent and aid recovery.
3. Aerate to ensure that rootzone is not compacted.
4. Manage thatch levels in a programmed approach.
5. Box-off cuttings from affected areas if possible.
6. Use fungicides as part of an IPM programme and be aware of causing resistance to one chemical group by its regular use.

i-TURF SOLUTIONS

Product type	Why	Scotts solution
Penetrant wetting agents	Reduce periods of leaf wetness.	H2Pro Maximise
Wetting agents	To ensure uniform wetting of soil profile.	H2Pro
Quality fertilizers	To encourage a healthy sward.	Scotts fertilizers (various)
Nitrogen containing fertilizers	Can help to prevent and to aid recovery.	Greenmaster; Spring & Summer Sierraform GT; Momentum Greenmaster Liquid; High N
Carbohydrate + seaweed bio stimulant	To encourage microbial activity and therefore the breakdown of thatch.	Greenmaster Blade
Approved fungicides.	To prevent or cure disease outbreaks.	Banner MAXX Daconil Weather Stik.