

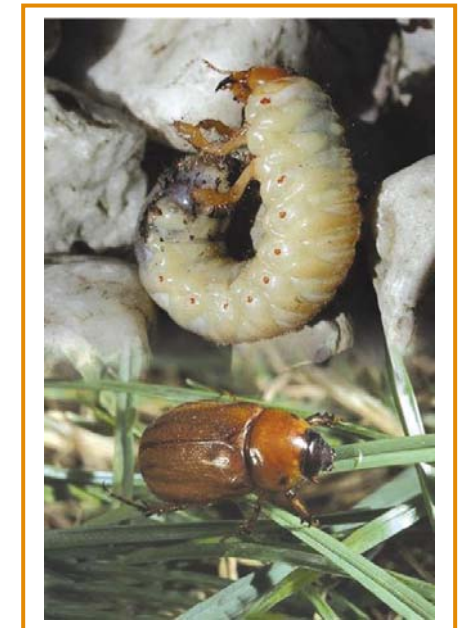
# Chafer Grubs

## BACKGROUND

- Adult chafers are medium- sized reddish brown beetles about 13-15mm long.
- The grub stage is most likely to be found in turf.
- The adult Chafer will lay its eggs around June -July where they hatch and start feeding on the roots of the grass from July to late September.
- From November onwards they burrow deep into the ground and lay dormant under the soil before moving to the surface in the spring when they emerge as beetles.
- Damage is most evident in August and September (grub stage).
- Early symptoms include gradual thinning, yellowing and weakening of the grass followed by scattered, irregular dead patches.
- As damage continues the dead patches may increase in size and the turf starts to wilt.

## APPROACH

1. Keep a look out for grub activity in August-September.
2. Monitor the turf in the autumn for increased bird activity and secondary damage.



## i-TURF SOLUTIONS

Product type	Why	Scotts solution
Biological nematode product	To control the grubs when they are young and close to there soil surface.	<a href="#">Nemasys G</a>