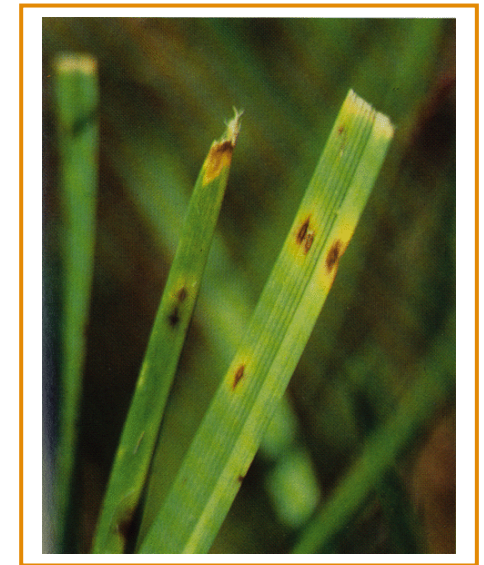


Leaf Spot/Melting Out

BACKGROUND

- Occurs during warmer seasons, high humidity, drought conditions, wet foliage, high shade levels, conditions typical of a stadium environment.
- Moves across the surface on water film.
- Mainly prevalent on Lolium spp, but can also be found on Festuca spp and Agrostis spp.
- Leaf Spot phase does not usually damage plants significantly.
- Crown infected plants turn yellow and die as temperatures increase; this is referred to as the melting-out phase of the disease.



APPROACH

1. Minimise surface wetness.
2. Increase airflow.
3. Balanced nutrition promotes harder turf more resistant to disease attack.
4. Remove excess thatch in an integrated programme.
5. Use resistant cultivars.
6. Raise height of cut to avoid stress if less than 50mm.
7. Use fungicides as part of an IPM programme and be aware of causing resistance to one chemical group by its regular use.

i-TURF SOLUTIONS

Product type	Why	Scotts solution
Penetrant wetting agent	Remove surface moisture.	H2Pro Maximise
Approved fungicide	Control disease.	Heritage